

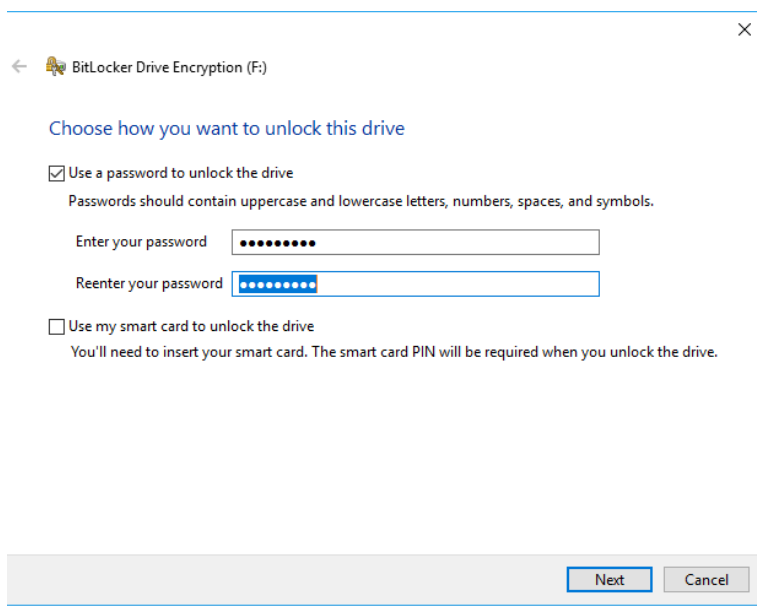
USB Drive Encryption with Bitlocker

Encrypting a drive.

Insert USB drive, you will get the option to encrypt or not, if you do not then the drive will be Read Only. If you click Yes to Encrypt a wizard will launch.

Encryption wizard:

Tick next to Use a password



← BitLocker Drive Encryption (F:) ×

Choose how you want to unlock this drive

Use a password to unlock the drive
Passwords should contain uppercase and lowercase letters, numbers, spaces, and symbols.

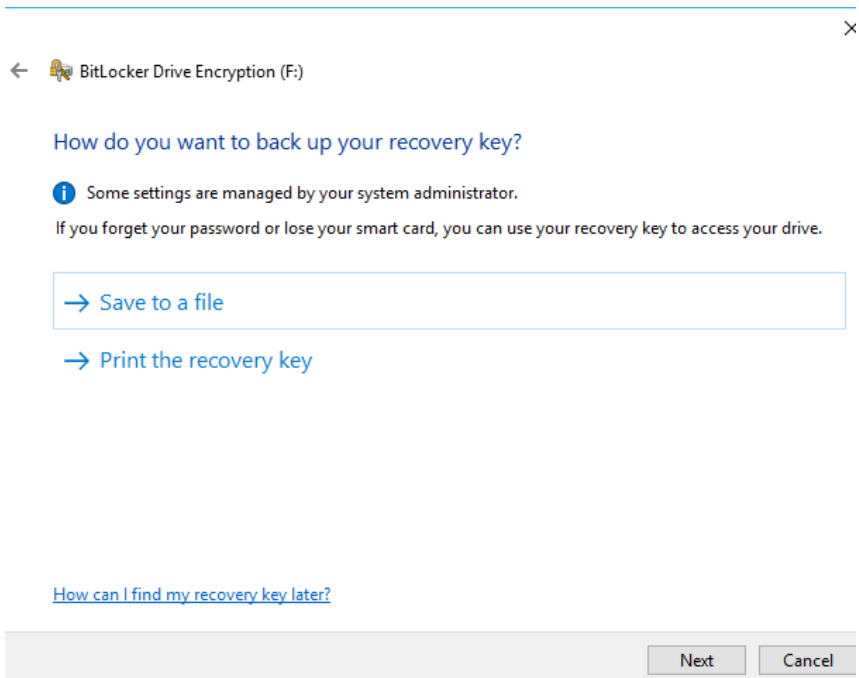
Enter your password

Reenter your password

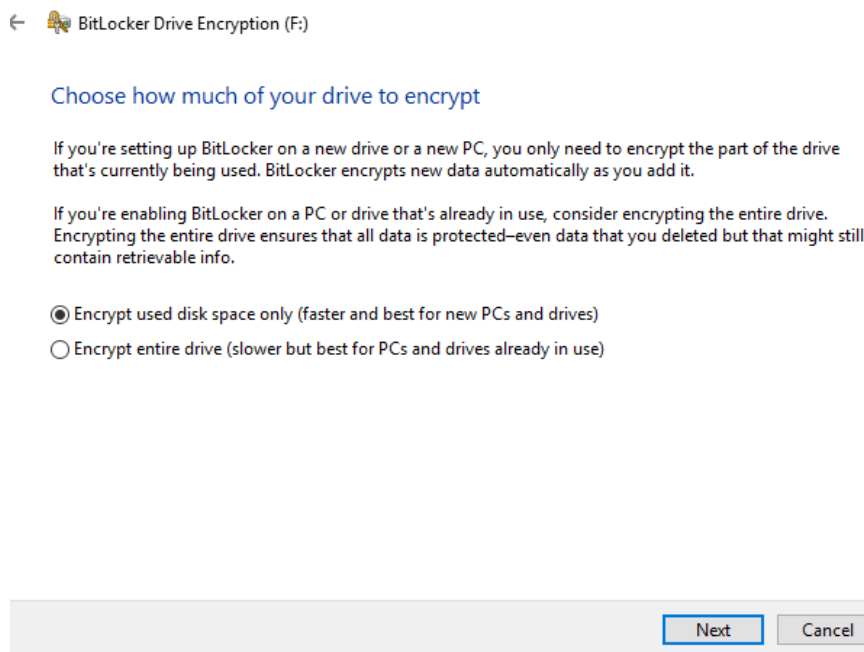
Use my smart card to unlock the drive
You'll need to insert your smart card. The smart card PIN will be required when you unlock the drive.

Next Cancel

Next you will be prompted to create a recovery key. This will be a text file. **It is very important that you do not lose this** as it will be needed if you forget the password that you have created. Without it **you will not be able to write to the drive or remove the encryption.**



Next choose how much of drive to encrypt. It is recommended to use the 1st option, to just encrypt the used space only.



Select the Encryption mode. Choose compatible mode.

Choose which encryption mode to use

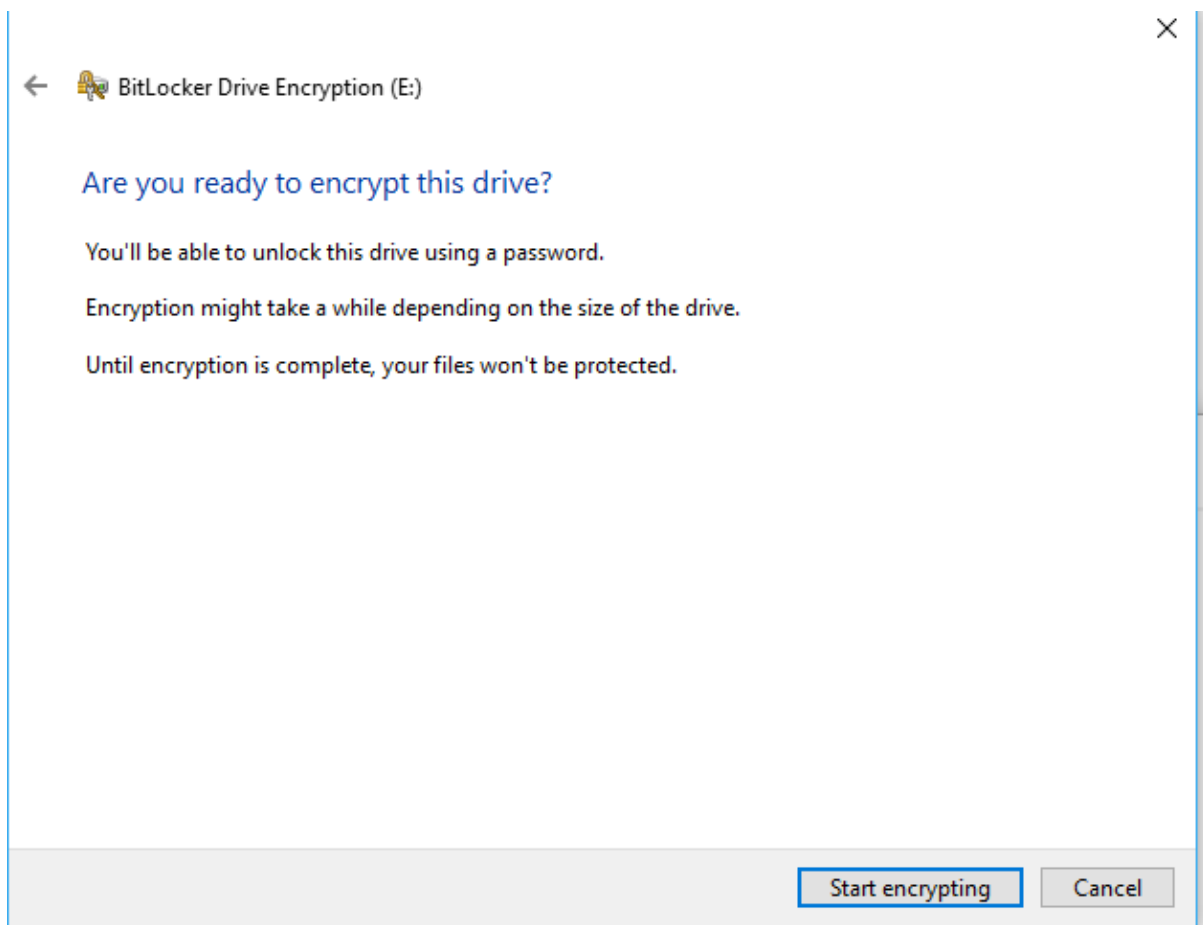
Windows 10 (Version 1511) introduces a new disk encryption mode (XTS-AES). This mode provides additional integrity support, but it is not compatible with older versions of Windows.

If this is a removable drive that you're going to use on older version of Windows, you should choose Compatible mode.

If this is a fixed drive or if this drive will only be used on devices running at least Windows 10 (Version 1511) or later, you should choose the new encryption mode

- New encryption mode (best for fixed drives on this device)
- Compatible mode (best for drives that can be moved from this device)

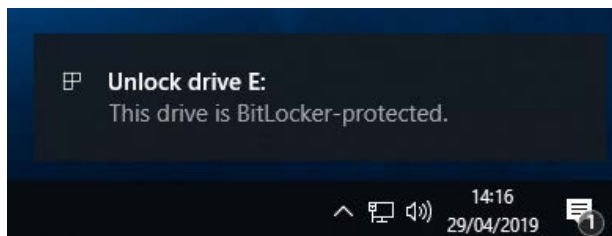
Next click Start Encrypting to start the process.



The Encryption process will take a while. As a guide it takes about 10 mins for 8Gb

Opening a file from an already encrypted USB drive.

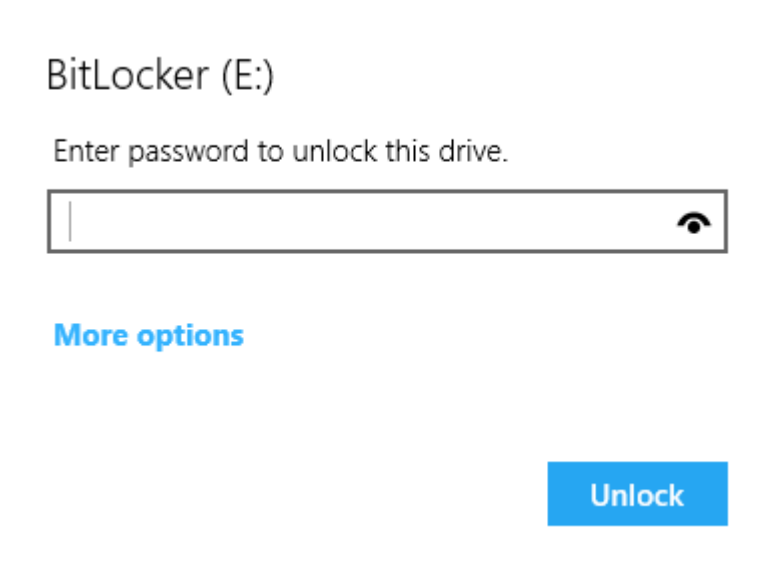
When the encrypted drive is inserted into a PC, there will be a popup to inform the user that it is encrypted.



The drive will also show in windows explorer with a padlock



Click on either will launch a dialog box asking for the password. Enter then click on Unlock.



The drive now shows as unlocked in File explorer & you will be able to browse & open / save documents as normal.

